



# Central Tablelands *Water*

---

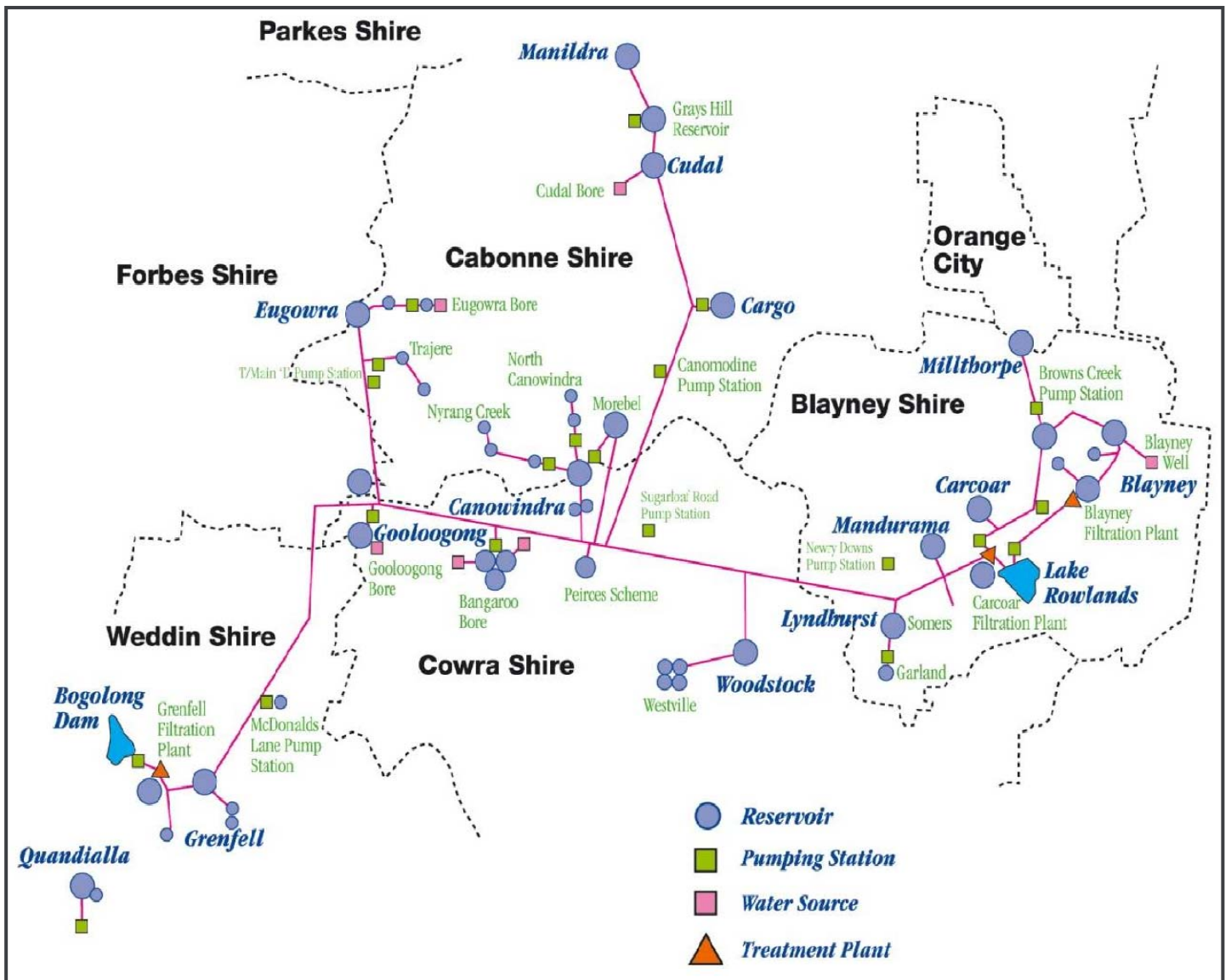
Annual  
Report  
2010/2011

---



# Central Tablelands Water

## System Layout



# CONTENTS

---

|  |    |
|--|----|
| Chairman’s Message .....   | 4  |
| General Managers Report.....   | 5  |
| Council Profile.....   | 6  |
| General Information – Council Meetings.....  | 6  |
| Organisational Structure.....  | 7  |
| Mission and Vision .....   | 7  |
| Councils Mission.....  | 7  |
| Councils Vision .....  | 7  |
| Legislative Requirements.....  | 9  |
| Activities to Protect Environmentally Sensitive Areas .....  | 9  |
| Legal Proceedings.....   | 9  |
| Chairman and Members Fees .....  | 9  |
| Senior Staff.....  | 10 |
| Contracts Awarded During Year.....   | 10 |
| Bush Fire Hazard Reduction .....   | 10 |
| Programs Promoting Services And Access To Services For People With Diverse Cultural And Linguistic Backgrounds ..... | 10 |
| Private Works Under Section 67(3).....   | 10 |
| Contributions Under Section 356.....   | 11 |
| Human Resources Activities.....  | 11 |
| Equal Employment Opportunity .....   | 11 |
| External Bodies Which Have Exercised Council-Delegated Functions .....   | 11 |
| Companies In Which Council Held A Controlling Interest.....  | 11 |
| Partnerships, Co-operatives And Other Joint Ventures To Which Council Was A Party.....                               | 12 |
| Asset Replacement and Upgrade Program .....  | 12 |
| Sales of Assets.....   | 12 |
| Plant Replacement Policy.....  | 12 |
| Water Consumption.....   | 13 |
| Water Usage Over Time .....  | 13 |
| Finance and Revenue.....   | 16 |
| Availability (Access) Charges .....  | 17 |
| Developer Charges.....   | 17 |



## CHAIRMAN'S MESSAGE



2010/2011 has been a difficult year with a very wet summer resulting in a significant drop in water consumption and a reduction in income of approximately \$600,000. This situation has resulted in CTW experiencing a significant deficit for the year.

As well as seasonal conditions effecting CTW's budget, water conservation education programmes are now achieving the desired result with most consumers now becoming water savvy and practicing demand management practices around the home.

CTW is completely reliant on the sale of water for the required revenue to function on a sound financial basis and, in order to continue to provide a quality water supply that consumers

expect and in order to provide ongoing funding for the 30 year capital works programme.

Councillors have seen the need to significantly increase water charges, with a typical residential bill in 2011/2012 estimated to increase by 12.5%. Consumers can expect similar increases over the next few years.

Consultants have completed the detailed Integrated Water Cycle Management Study which was a joint project with CTW's three constituent councils of Blayney, Cabonne and Weddin. The completed study is currently with the NSW office of Water for endorsement and should be presented to the four councils early in 2012.

CTW continues to be recognised as a water utility operating within the NSW Office of Water's Guidelines for Best Practice in Water and Sewerage Management.

I am grateful that CTW continues to be served by a committed Council and a dedicated team in management, administration and operations ensuring that our consumers can rely on a water supply of high quality and reliability.

A handwritten signature in black ink, appearing to read 'John Farr'.

Cr. J.S Farr  
Chairman

---

*General Manager Tony Perry congratulating the Chairman John Farr OAM, on receiving the Shires Association award for Continuous Service in Local Government.*

---



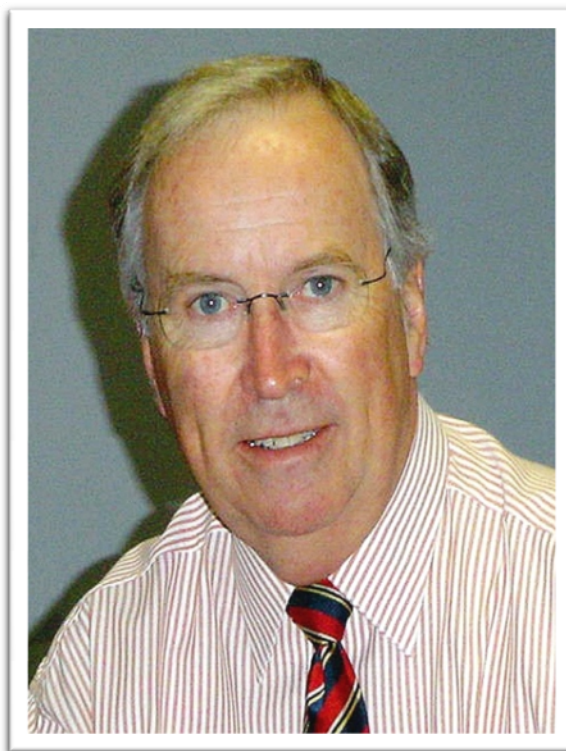
## GENERAL MANAGERS REPORT

---

In last year's Annual Report I commented that it was pleasing to see the beginning of the end of what has been reported as the worst drought on record. Whilst the breaking of the drought brought enormous relief, especially to the farming community, it resulted in 2010/2011 experiencing a summer of continuous rainfall and, as a consequence, there was a dramatic reduction in water consumption which in turn resulted in Council recording a significant financial deficit for the year.

The deficit aside, Council continued to provide consumers with a high level of service with a focus on water quality and reliability.

During the year Council continued with its reticulation mains renewal programme with operations staff renewing approximately 1,800 metres in Millthorpe and 500 metres in Carcoar. Mains extensions were carried out in Millthorpe, Canowindra, Manildra, Grenfell and Blayney. To continue with Council's commitment to water quality, a polyelectrolyte system was installed at Blayney Water Filtration Plant.



Unfortunately, the plan to enlarge Lake Rowlands and provide water security to a large area of the Central Tablelands and Central West is hitting a few hurdles and is not receiving the State and Federal Government support that the proposal deserves. The Central Regional Organisation of Councils (Centroc) continues to lobby and provide advocacy for this important infrastructure project. Both levels of government need to decide whether they are serious in their claims to support and build much needed infrastructure in regional areas.

Council's annual financial accounts for 2010/2011 reveal net assets increasing from \$57.19 million to \$57.86 million and a net operating deficit of \$1.12 million after providing for depreciation expense of \$1.78 million. Notwithstanding this result, Council's Auditors, Morse Group, have reported that Council continues to remain in a sound financial position. A full copy of Council's Financial Statements is included in this Annual Report.

Once again the *Performance Monitoring Report* for NSW water utilities, published by the NSW Office of Water, reflects that Council is fully compliant with all levels of *Best-Practice Management of Water Supply and Sewerage Services Guidelines*.

I invite all consumers to visit Council's website [www.ctw.nsw.gov.au](http://www.ctw.nsw.gov.au) which includes copies of Council's business papers, minutes, Strategic Business Plan and Management Plan, Annual Report as well as on-line forms that can be downloaded as required.

A handwritten signature in black ink, appearing to read 'A Perry'. The signature is fluid and cursive, written over a white background.

A Perry  
General Manager



## COUNCIL PROFILE

---

Central Tablelands Water County Council is a constituency of three local government areas, namely, Blayney Shire, Cabonne Shire and Weddin Shire. The Council comprises two delegates each elected by their constituent council for a four-year term. The following Councillors were elected in September 2008 to represent their respective council's until the next local government elections in September 2012.

### Blayney



Cr Geoff Braddon OAM



Cr Kevin Radburn

### Cabonne



Cr John Farr OAM  
*Chairman*



Cr Kevin Duffy

### Weddin



Cr Geoff McClelland  
*Deputy Chairman*



Cr Barry Hinde

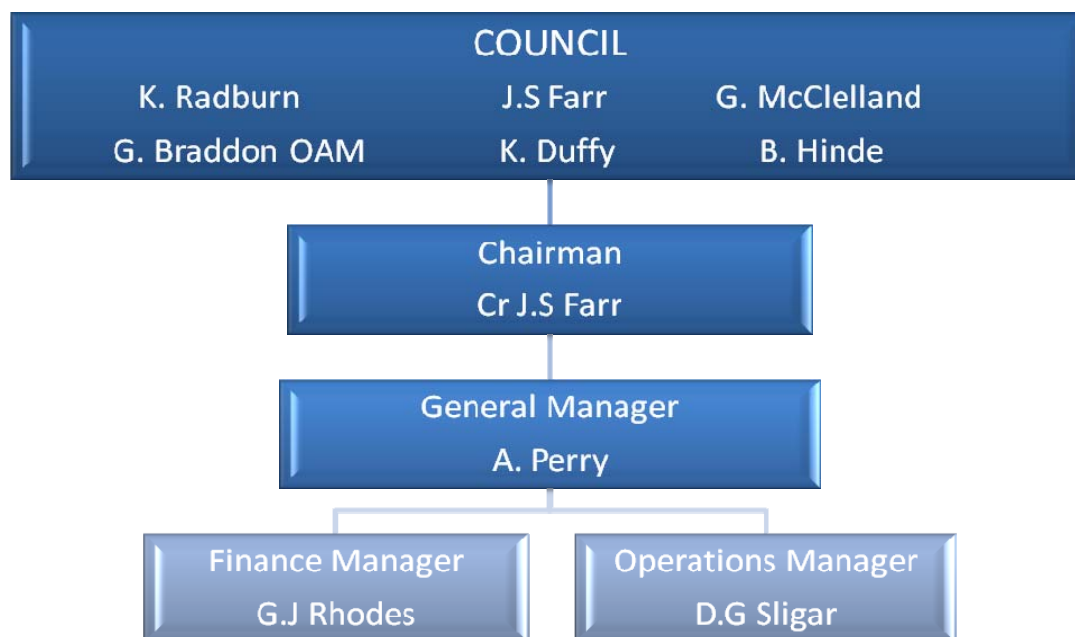
## GENERAL INFORMATION – COUNCIL MEETINGS

---

Meetings of Council are held on the second Wednesday of alternate months, commencing in February each year. The meetings alternate between the towns of Grenfell, Blayney and Molong. Meetings are held in Molong in June and December, Grenfell in August and February and Blayney in April and October.

## ORGANISATIONAL STRUCTURE

---



## MISSION AND VISION

---

### COUNCILS MISSION

---

Central Tablelands Water will develop a commercial focus as it operates in partnership with the communities it serves, fostering their development and growth, while maintaining both its level of service and its prices at an acceptable level.

### COUNCILS VISION

---

Central Tablelands Water sees its future as a Regional Water Authority, independent of other agencies. It sees itself as a responsible member of the communities it serves, aiding the development of the region. It will continue to develop further sources of water and continue to supply an economical and acceptable water supply to its customers, and it will do so in an ecologically sustainable manner. Central Tablelands Water will continue to evolve its method of operations to incorporate a sound commercial focus. It will do so without compromising on the services it provides, becoming more efficient and maintaining process at a reasonable level.



---

*Millthorpe Mains Renewal 2011*

---



## LEGISLATIVE REQUIREMENTS

---

### ACTIVITIES TO PROTECT ENVIRONMENTALLY SENSITIVE AREAS

---

#### Section 428 (2) (c)

Council is not involved in the management of any environmentally sensitive areas. Council's water storages at Lake Rowlands and Bogolong Dam will continue to be operated according to best industry practice to ensure the long-term integrity of the storages, especially as regards controlling nutrient levels and blue-green algae populations.

Council has continued with its annual re-vegetation programme at Lake Rowlands following the complete eradication of willows carried out some years ago.

Council's filtration plants at Carcoar and Blayney are also operated according to industry best practice to ensure that all sludge is contained on-site and disposed of in an environmentally responsible manner. Supernatant water is recycled back through the filtration plants.

All construction sites will be maintained and restored in accordance with best practice guidelines for environmental control.

### LEGAL PROCEEDINGS

---

#### Section 428 (2) (e)

Council is currently involved with a significant number of other councils in a joint action against Lehman Bros in an effort to recover losses in the values of its investment capital.

### CHAIRMAN AND MEMBERS FEES

---

#### Section 428 (2) (f)

The total allowance and fees paid to the Chairman and Councillors during 2010/2011 amounted to \$68,265.00.

Council's policy for the provision of facilities and the payment of councillors' expenses is as follows:



*Above: CTW's Administration Office, Blayney NSW*

1. Council pay councillors an annual fee based on the maximum fee as determined by the Local Government Remuneration Tribunal;
2. In addition to the annual fee, Council reimburse actual expenses incurred to any councillor who:
  - attends a meeting of any committee of Council,
  - attends an inspection within the area in compliance with a resolution of the Council,
  - undertakes business of the Council outside of the area in compliance with a resolution of Council.
3. Council recompense councillors for travelling expenses at the rates per kilometre allowed at the time by the Australian Taxation Office, for all travelling associated with attendance at Council meetings or other business as specified above.
4. Council allow councillors any reasonable use of facilities to assist in their carrying out of business on behalf of the Council, such use being entirely at the discretion of the General Manager.



5. Council will provide the Chairman with the following facilities:

- an office in the Council's Administrative Building;
- access to telephone, facsimile and photocopy facilities for Council business purposes;
- secretarial services for Council business as required;
- identification badge bearing Council's crest;
- payment of conference/seminar/workshop registration fees for attendance authorised by Council; and,
- arrangement and payment of travel in respect of Council commitments.

6. Council will provide the Councillors with the following facilities:

- access to telephone, facsimile and photocopy facilities for Council business purposes;
- secretarial services for Council business as required;
- identification badge bearing Council's crest;
- payment of conference/seminar/workshop registration fees for attendance authorised by Council; and,
- arrangement and payment of travel in respect of Council commitments.

7. Meals and refreshments will be provided to the Chairman and Councillors in conjunction with Council/Committee meetings and other functions/meetings as appropriate.

8. Expenses incurred whilst on approved travel outside the Council area will attract reimbursement according to the following guidelines:

- (a) Meals – where meals are not provided, the total bill for meals should not exceed \$60 per day.
- (b) Accommodation – where travel involves an overnight stay away from home the acceptable

maximum expenditure on accommodation is:

- metropolitan areas \$200.00 per night
- country areas \$100.00 per night
- provided that all accommodation is approved prior to travelling, where practicable.

### SENIOR STAFF

---

Section 428 (2) (g)

The General Manager is the only employee classified as senior staff. The total salary package for the General Manager in 2010/2011, including superannuation and motor vehicle, totalled \$142,737.00.

### CONTRACTS AWARDED DURING YEAR

---

Section 428 (2) (h)

Council did not enter into any contracts during 2010/2011.

### BUSH FIRE HAZARD REDUCTION

---

Section 428 (2) (i1)

Bush fire hazard reduction activities are undertaken by constituent Councils and are not an activity or responsibility of Central Tablelands Water.

### PROGRAMS PROMOTING SERVICES AND ACCESS TO SERVICES FOR PEOPLE WITH DIVERSE CULTURAL AND LINGUISTIC BACKGROUNDS

---

Section 428 (2) (j)

This activity is the responsibility of the constituent Councils and, being a single purpose water authority, does not involve Central Tablelands Water.

### PRIVATE WORKS UNDER SECTION 67(3)

---

Section 428 (2) (k)

Council did not carry out any work on private land during 2010/2011 that was fully or partly subsidised by Council.



## CONTRIBUTIONS UNDER SECTION 356

---

### Section 428 (2) (l)

The amounts contributed or otherwise granted under Section 356 during 2010/2011 totalled \$8,538.00.

## HUMAN RESOURCES ACTIVITIES

---

### Section 428 (2) (m)

Council has a commitment to ensuring that its entire staff is appropriately skilled and trained to carry out their responsibilities. Various in-house and external training programs will continue to be undertaken to ensure that the required skills are available.

The following training was undertaken by operations staff during 2010/2011:

| Training Course                         | Number of Participants |
|---|------------------------|
| Traffic Control - Yellow Card           | 2                      |
| Traffic Control - Blue Card             | 2                      |
| Working Near Power Lines                | 6                      |
| Chemical Certificate                    | 6                      |
| Chemical Certificate - Refresher        | 5                      |
| Truck Licence                           | 1                      |
| OHS Induction – White Card              | 1                      |
| Certificate 3 in Water Supply Operation | 3                      |
| Certificate 4 in Water Supply Operation | 3                      |
| In House – Water Supply Operations      | 10                     |

In the absence of a Consultative Committee, management will continue to monitor Council's workplace environment and the implementation of Council's training and equal employment opportunity programs.

Management will:

- review the salary system to ensure progression through the salary structure is achieved upon the acquisition and use of skills and agreed performance criteria,

- benchmark existing remuneration levels of all positions within Council with remuneration levels of like positions across a broad range of other Councils,
- conduct annual performance reviews based on predetermined objectives and performance standards for all staff,
- review and maintain Council's training plan,
- develop a set of relevant competency standards for all positions,
- provide training on the basis of identified needs and priorities,
- continue to ensure that there is no compromise in regards to workplace safety and that all recommendations resulting from risk management assessments are carried out.

## EQUAL EMPLOYMENT OPPORTUNITY

---

### Section 428 (2) (n)

Council has adopted an Equal Employment Opportunity Management Plan, a copy of which has been distributed to all Council employees.

Council's philosophy for its Equal Employment Opportunity Management Plan is to create equality of opportunity, for all employees and potential employees, by ensuring that all recruitment, advancement and promotions are made on a merit basis.

## EXTERNAL BODIES WHICH HAVE EXERCISED COUNCIL-DELEGATED FUNCTIONS

---

### Section 428 (2) (o)

The Council has not delegated any functions to external bodies.

## COMPANIES IN WHICH COUNCIL HELD A CONTROLLING INTEREST

---

### Section 428 (2) (p)

Council does not have any interest whatsoever in any company.



## PARTNERSHIPS, CO-OPERATIVES AND OTHER JOINT VENTURES TO WHICH COUNCIL WAS A PARTY

---

Section (428) (2) (q).

Council is not party to any partnerships, co-operatives or joint ventures.

## ASSET REPLACEMENT AND UPGRADE PROGRAM

---

Council proposes to carry out the following asset replacements during the period July, 2011 to June, 2014. The order presented does not represent a priority order.

1. Mains replacement
  - **Reticulation Mains** – In 2011/2012 - Replacement of water mains in South Canowindra, at an estimated cost of \$220,807.
  - **Reticulation Mains** - In 2011/2012 – As determined at an estimated cost of \$212,180.
  - **Reticulation Mains** - In 2012/2013 – As determined at an estimated cost of \$218,545.
  - **Trunk Mains** – in 2013/2014 - Commencement of the replacement of Trunk Main 'K' between Gooloogong and Grenfell at an estimated cost of \$173,890.
2. Pump Replacements
  - Provision is made for the replacement of pumps to the value of \$41,500 in
  - 2011/2012, \$42,745 in 2012/2013 and 44,027 in 2013/2014.
3. Blayney Water Filtration Plant  
in 2011/2012 installation of a Powder Activated Carbon (PAC) system at an estimated cost of \$80,000.
4. Other
  - Annual replacement of water meters and services estimated at \$89,230 in



2011/2012, \$91,907 in 2012/2013 and \$94,664 in 2013/2014.

- IT System upgrade in 2011/2012 at an estimated cost of \$86,013.
- Administration building refurbishment in 2013/2014 estimated at \$11,500.
- Motor vehicles and other plant in accordance with policy

## SALES OF ASSETS

---

Council does not propose to dispose of any of its existing major assets during the period covered by this Plan.

Motor vehicles and other plant items will be replaced according to Council's present replacement policy, which is outlined below. Minor assets will be disposed of as, and if, it is considered necessary.

## PLANT REPLACEMENT POLICY

---

Council has adopted as its policy that all vehicle changeovers be made:

1. at best market prices using either government auction or tender and
2. be funded from the plant reserve

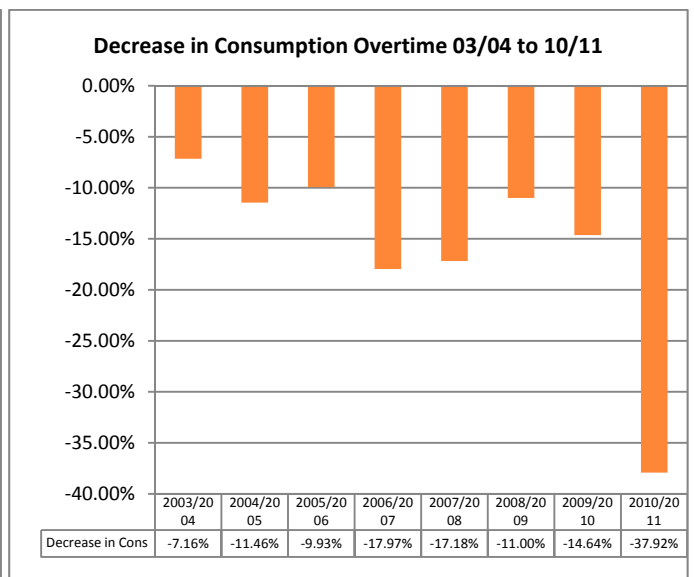
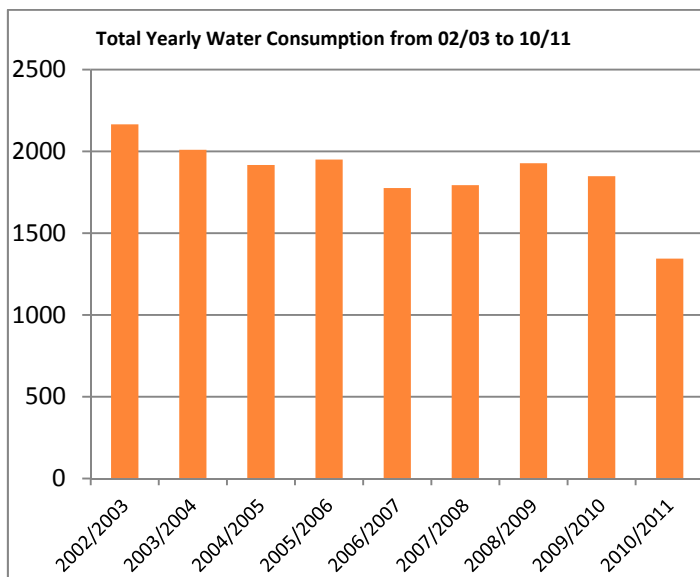


*Above: CTW Staff working on Trunk Main 'C' at Gooloogong Bridge, Gooloogong NSW*

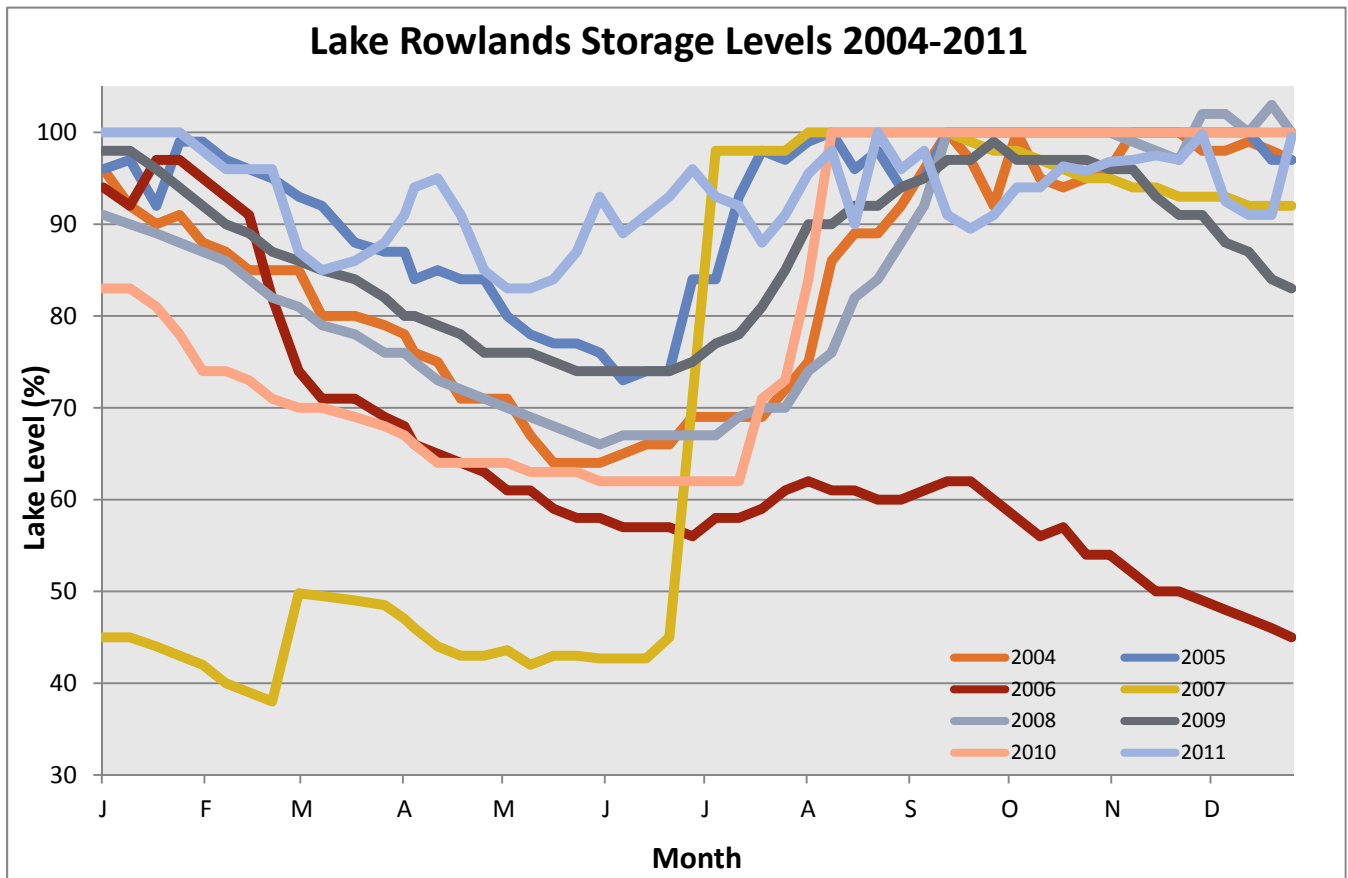
# WATER CONSUMPTION

| 2002/2003 | 2003/2004 | 2004/2005 | 2005/2006 | 2006/2007 | 2007/2008 | 2008/2009 | 2009/2010 | 2010/2011 | County Area   |                          |
|-----------|-----------|-----------|-----------|-----------|-----------|-----------|-----------|-----------|---|--------------------------|
| 356       | 336       | 341       | 342       | 295       | 270       | 299       | 312       | 254       | ML  | Blayney                  |
| 29        | 25        | 23        | 25        | 22        | 19        | 19        | 21        | 19        | ML  | Carcoar                  |
| 16        | 14        | 14        | 14        | 13        | 13        | 14        | 12        | 12        | ML  | Mandurama                |
| 106       | 99        | 86        | 88        | 70        | 67        | 75        | 72        | 45        | ML  | Eugowra                  |
| 71        | 66        | 65        | 68        | 63        | 60        | 64        | 65        | 57        | ML  | Millthorpe               |
| 27        | 25        | 21        | 24        | 21        | 17        | 21        | 18        | 16        | ML  | Lyndhurst                |
| 300       | 292       | 277       | 294       | 263       | 223       | 266       | 215       | 157       | ML  | Canowindra               |
| 394       | 379       | 376       | 383       | 316       | 289       | 282       | 256       | 195       | ML  | Grenfell                 |
| 21        | 15        | 16        | 14        | 15        | 42        | 45        | 10        | 8         | ML  | Quandialla               |
| 44        | 49        | 52        | 50        | 47        | 34        | 40        | 42        | 37        | ML  | Cudal                    |
| 28        | 24        | 24        | 24        | 22        | 19        | 21        | 20        | 17        | ML  | Cargo                    |
| 61        | 56        | 54        | 58        | 50        | 57        | 61        | 47        | 39        | ML  | Manildra                 |
| 246       | 182       | 166       | 172       | 183       | 127       | 128       | 287       | 205       | ML  | Rurals                   |
| 293       | 282       | 224       | 247       | 217       | 197       | 142       | 156       | 117       | ML  | Bulk Sales               |
| 173       | 166       | 178       | 147       | 179       | 359       | 450       | 315       | 166       | ML  | Industrials              |
| 2,165     | 2,010     | 1,917     | 1,950     | 1,776     | 1,793     | 1,927     | 1,848     | 1,344     | ML  | <b>Sub Total</b>         |
| 135       | 45        | 126       | 163       | 119       | 64        | 105       | 112       | 130       | ML  | Est. Leakage             |
| 112       | 50        | 50        | 30        | 50        | 50        | 127       | 50        | 27        | ML  | Flushing of mains        |
| 127       | 50        | 10        | 15        | 15        | 15        | 15        |           | 7         | ML  | Unaccounted              |
| 2,539     | 2,155     | 2,103     | 2,158     | 1,960     | 1,922     | 2,174     | 2,010     | 1,508     | ML  | <b>Total Consumption</b> |
| 14.73%    | 6.73%     | 8.84%     | 9.64%     | 9.39%     | 6.71%     | 11.36%    | 8.06%     | 10.88%    | <b>Water losses as % of total water output</b>          |                          |
|           | -7.16%    | -11.46%   | -9.93%    | -17.97%   | -17.18%   | -11.00%   | -14.64%   | -37.92%   | <b>% increase/decrease consumption on 2002/2003</b>     |                          |
|           | -7.16%    | -4.63%    | 1.72%     | -8.92%    | 0.96%     | 7.47%     | -4.10%    | -27.27%   | <b>% increase/decrease consumption on previous year</b> |                          |

# WATER USAGE OVER TIME



# LAKE ROWLANDS STORAGE LEVELS 2004-2011



Water flowing over Lake Rowlands dam wall after heavy rain

# WATER ANALYSIS

|  |  |
|--|--|
| <b>AHS - Greater Western PHU</b><br>Water Supply Authority - <b>Central Tablelands Water (CT)</b><br>Date Range - From - <b>01 July 2010 to 30 June 2011</b><br>Sample Type/s - <b>All</b> | <b>Laboratory/s - ICPMR-DAL Laboratory</b><br>Institute of Clinical Pathology and Medical Research-Division of Analytical Laboratories.<br>NATA Accredited Laboratory Number: 3189 |
| Barcode Count - These results represent <b>218</b> distinct samples.   |  |

## Summary Display

| Parameter                    | Guideline Value          | Mean     | Median | Standard deviation | Min.   | Max.   | Number of samples | Number of exceptions | 95th percentile | 5th percentile | % meeting guideline values |
|------------------------------|--------------------------|----------|--------|--------------------|--------|--------|-------------------|----------------------|-----------------|----------------|----------------------------|
| Total Coliforms              | 0.0000 cfu/100 mL        | 0.5668   | 0      | 2.7552             | 0      | 27     | 187               | 17                   | 5.0853          | 1.35           | 91                         |
| E. coli                      | 0.0000 cfu/100 mL        | 0        | 0      | 0                  | 0      | 0      | 187               | 0                    | 0               | 0              | 100                        |
| pH                           | 6.5 - 8.5                | 7.6314   | 7.68   | 0.1761             | 7.1    | 7.91   | 198               | 0                    | 7.9201          | 7.1405         | 100                        |
| Turbidity                    | 5.0000 NTU               | 0.3653   | 0.37   | 0.1103             | 0.1    | 1      | 198               | 0                    | 0.5461          | 0.145          | 100                        |
| Free Chlorine                | 5.0000 mg/L              | 0.4882   | 0.51   | 0.1217             | 0.16   | 0.71   | 180               | 0                    | 0.6878          | 0.1875         | 100                        |
| Total Chlorine               | 5.0000 mg/L              | 0.6148   | 0.625  | 0.1178             | 0.3    | 0.88   | 180               | 0                    | 0.8081          | 0.329          | 100                        |
| Total Dissolved Solids (TDS) | 500.0000 mg/L            | 173.9412 | 91     | 188.47             | 73     | 574    | 17                | 3                    | 483.0319        | 98.05          | 82                         |
| Aluminium                    | 0.2000 mg/L              | 0.047    | 0.0099 | 0.087              | 0.0099 | 0.34   | 17                | 1                    | 0.1896          | 0.0264         | 94                         |
| Antimony                     | 0.0030 mg/L              | 0.001    | 0.001  | 0                  | 0.001  | 0.001  | 17                | 0                    | 0.001           | 0.001          | 100                        |
| Arsenic                      | 0.0070 mg/L              | 0.0013   | 0.001  | 0.0008             | 0.001  | 0.004  | 17                | 0                    | 0.0027          | 0.0012         | 100                        |
| Barium                       | 0.7000 mg/L              | 0.0236   | 0.019  | 0.0124             | 0.014  | 0.054  | 17                | 0                    | 0.044           | 0.016          | 100                        |
| Boron                        | 4.0000 mg/L              | 0.0992   | 0.099  | 0.0004             | 0.099  | 0.1    | 17                | 0                    | 0.0998          | 0.0991         | 100                        |
| Cadmium                      | 0.0020 mg/L              | 0.0005   | 0.0005 | 0                  | 0.0005 | 0.0005 | 17                | 0                    | 0.0005          | 0.0005         | 100                        |
| Calcium                      | 9999.0000 mg/L           | 16.0176  | 11.9   | 9.4876             | 10.1   | 36.3   | 17                | 0                    | 31.5774         | 11.41          | 100                        |
| Chloride                     | 250.0000 mg/L            | 49.4118  | 20     | 66.6531            | 13     | 189    | 17                | 0                    | 158.7228        | 21.8           | 100                        |
| Chromium                     | 0.0500 mg/L              | 0.0053   | 0.005  | 0.0012             | 0.005  | 0.01   | 17                | 0                    | 0.0073          | 0.0053         | 100                        |
| Copper                       | 2.0000 mg/L              | 0.0146   | 0.013  | 0.0084             | 0.007  | 0.041  | 17                | 0                    | 0.0284          | 0.0087         | 100                        |
| Fluoride                     | 1.5000 mg/L              | 1.0545   | 1.06   | 0.1892             | 0.69   | 1.43   | 31                | 0                    | 1.3648          | 0.727          | 100                        |
| Iodide                       | 0.1000 mg/L              | 0.0749   | 0.0749 | 0.0779             | 0.0198 | 0.13   | 2                 | 1                    | 0.2027          | 0.0253         | 50                         |
| Iodine                       | 0.1000 mg/L              | 0.057    | 0.02   | 0.0991             | 0.0198 | 0.33   | 17                | 2                    | 0.2196          | 0.0353         | 88                         |
| Iron                         | 0.3000 mg/L              | 0.0276   | 0.01   | 0.0377             | 0.0099 | 0.16   | 17                | 0                    | 0.0894          | 0.0174         | 100                        |
| Lead                         | 0.0100 mg/L              | 0.002    | 0.002  | 0                  | 0.002  | 0.002  | 17                | 0                    | 0.002           | 0.002          | 100                        |
| Magnesium                    | 9999.0000 mg/L           | 10.6418  | 7.32   | 8.1562             | 5.68   | 28.36  | 17                | 0                    | 24.0179         | 6.814          | 100                        |
| Manganese                    | 0.5000 mg/L              | 0.0053   | 0.005  | 0.0008             | 0.005  | 0.008  | 17                | 0                    | 0.0067          | 0.0052         | 100                        |
| Mercury                      | 0.0010 mg/L              | 0.0001   | 0.0001 | 0.0001             | 0.0001 | 0.0003 | 17                | 0                    | 0.0002          | 0.0001         | 100                        |
| Molybdenum                   | 0.0500 mg/L              | 0.005    | 0.005  | 0                  | 0.005  | 0.005  | 17                | 0                    | 0.005           | 0.005          | 100                        |
| Nickel                       | 0.0200 mg/L              | 0.0099   | 0.0099 | 0                  | 0.0099 | 0.0099 | 17                | 0                    | 0.0099          | 0.0099         | 100                        |
| Nitrate                      | 50.0000 mg/L             | 1.2329   | 1      | 0.4386             | 0.99   | 2      | 17                | 0                    | 1.9522          | 1.0405         | 100                        |
| Nitrite                      | 3.0000 mg/L              | 0.099    | 0.099  | 0                  | 0.099  | 0.099  | 17                | 0                    | 0.099           | 0.099          | 100                        |
| Selenium                     | 0.0100 mg/L              | 0.0021   | 0.002  | 0.0005             | 0.002  | 0.004  | 17                | 0                    | 0.0029          | 0.0021         | 100                        |
| Silver                       | 0.1000 mg/L              | 0.002    | 0.002  | 0                  | 0.002  | 0.002  | 17                | 0                    | 0.002           | 0.002          | 100                        |
| Sodium                       | 180.0000 mg/L            | 34.7647  | 10     | 55.5389            | 7      | 157    | 17                | 0                    | 125.8485        | 14.5           | 100                        |
| Sulfate                      | 500.0000 mg/L            | 11.2353  | 2      | 20.5838            | 1      | 55     | 17                | 0                    | 44.9927         | 3.7            | 100                        |
| Total Hardness as CaCO3      | 200.0000 mg/L            | 83.8353  | 61.4   | 57.1472            | 49.9   | 206.9  | 17                | 2                    | 177.5567        | 57.75          | 88                         |
| True Colour                  | 15.0000 Hazen Units (HU) | 2.1856   | 2      | 1.225              | 0.99   | 5      | 16                | 0                    | 4.1946          | 1.1905         | 100                        |
| Zinc                         | 3.0000 mg/L              | 0.0176   | 0.01   | 0.0125             | 0.0099 | 0.05   | 17                | 0                    | 0.0382          | 0.0119         | 100                        |
| Fluoride (field result WSA)  | 1.5000 mg/L              | 0.9846   | 0.975  | 0.046              | 0.92   | 1.09   | 28                | 0                    | 1.0601          | 0.9285         | 100                        |
| Fluoride Ratio               | 0.8 - 1.2                | 0.9182   | 0.92   | 0.1336             | 0.64   | 1.27   | 28                | 5                    | 1.1374          | 0.6715         | 82                         |



## FINANCE AND REVENUE

---



*Above: Operations Manager Darrell Sligar, Finance Officer Gavin Rhodes and General Manager Tony Perry*

---

The County Council model has proven to be a very effective institutional arrangement for the provision of water supply as the governance arrangement of the Council, comprising elected representatives from each of the constituent councils, maintains a close relationship between the community expectations and the policy decisions of the Council.

Council considers that its pricing is cost effective and the 2010/2011 NSW Water Supply & Sewerage Performance Monitoring Report, issued by the NSW Office of Water (NOW), reports that Council was operating with full cost recovery. However, due to significant reductions in interest earnings from investments, increased depreciation costs due to revaluation of assets and significantly reduced water sales Council completed 2010/2011 with a net operating deficit of \$1.12 million.

Council resolved in 2006/2007 to effect an annual increase of 8% on consumption charges in order to self-fund an extensive capital works programme (\$52.84 million in 2010 \$ terms) over the next 30 years without the need for loan borrowings or government subsidies. Due to the significant reduction in water consumption, a forecast rise of 17% in energy costs in 2011/12 and other cost pressures such as increased depreciation, in order to maintain its 30 year financial plan and capital works programme, Council resolved to increase the 2011/2012 annual availability charge for a standard 20mm service from \$124.00 per year to \$160.00 per year, with larger services increasing respectively. Consumption charges were increased by 8% from \$1.70 to \$1.84. As a result of the increased charges, Council's estimated overall revenue from water charges is estimated to increase by 13,26%, with the typical residential bill of 254 kilolitres per year estimated to increase by 12.5%.

Council has a dedicated focus on consumer expectations and, through its pricing policy, consumers are receiving a water supply of high quality and reliability and this is wholly attributable to the pricing policy being able to fund an ongoing programme of infrastructure renewal and upgrade.

Council has embraced Best Practice Pricing of Local Water Utility services as outlined in the NSW Office of Water Best Practice Management of Water Supply and Sewerage Guidelines. In summary, the following pricing regime exists for Central Tablelands Water:

1. A two part pricing policy of an availability (access) charge, determined on the diameter of the meter, and a consumption charge,
2. Residential and rural consumers are subject to a 50% increase in the usage charge for consumption in excess of 450 kL per annum,
3. There are no non-residential cross subsidies.
4. Water accounts are rendered quarterly.



## AVAILABILITY (ACCESS) CHARGES

---

The availability charge is calculated by multiplying the charge for a standard 20mm connection by the flow capacity factor (FCF) listed in the Flow Capacity Table below.

| Flow Capacity Table       |      |        |      |      |      |       |       |
|---------------------------|------|--------|------|------|------|-------|-------|
| Diameter of Water Service | 20mm | 25mm   | 32mm | 40mm | 50mm | 80mm  | 100mm |
| Flow Capacity Factor      | 1.00 | 1.5625 | 2.56 | 4.00 | 6.25 | 16.00 | 25.00 |

## DEVELOPER CHARGES

---

Incorporated in Council's Developer Servicing Plan is the calculated developer charge per Equivalent Tenement (ET) levied on all new developments, or additions/changes to existing developments, supplied from the Lake Rowlands Supply area.

**The Section 64 Developer Charge for 2011/2012 is \$8,478.00 per ET.**

Council resolved that the determination of an ET would be in accordance with the Section 64 Determination of Equivalent Tenement Guidelines, published by the NSW Water Directorate and that the charge would be indexed on 1 July each year in accordance with the change in the Consumer Price Index for Sydney in the preceding 12 months to December.

Council has also adopted a capital contribution charge for developments on existing vacant unconnected land, not subject to subdivision (in-fill blocks), within all towns and villages, with the exception of Quandialla. This charge would also be indexed on 1 July each year in accordance with the change in the Consumer Price Index for Sydney in the preceding 12 months to December. **The capital contribution charge on existing vacant unconnected land for 2011/2012 is \$3,666.00 per ET. This charge will rise to the equivalent of the Section 64 Developer Charge in 2015/2016.**

The capital contribution charge for all vacant unbuilt upon land within the existing village of Quandialla remains in accordance with the adopted fees and charges for 2011/2012.



---

*Above: Lake Rowlands*

---

